

## Content-Cataloger PRO

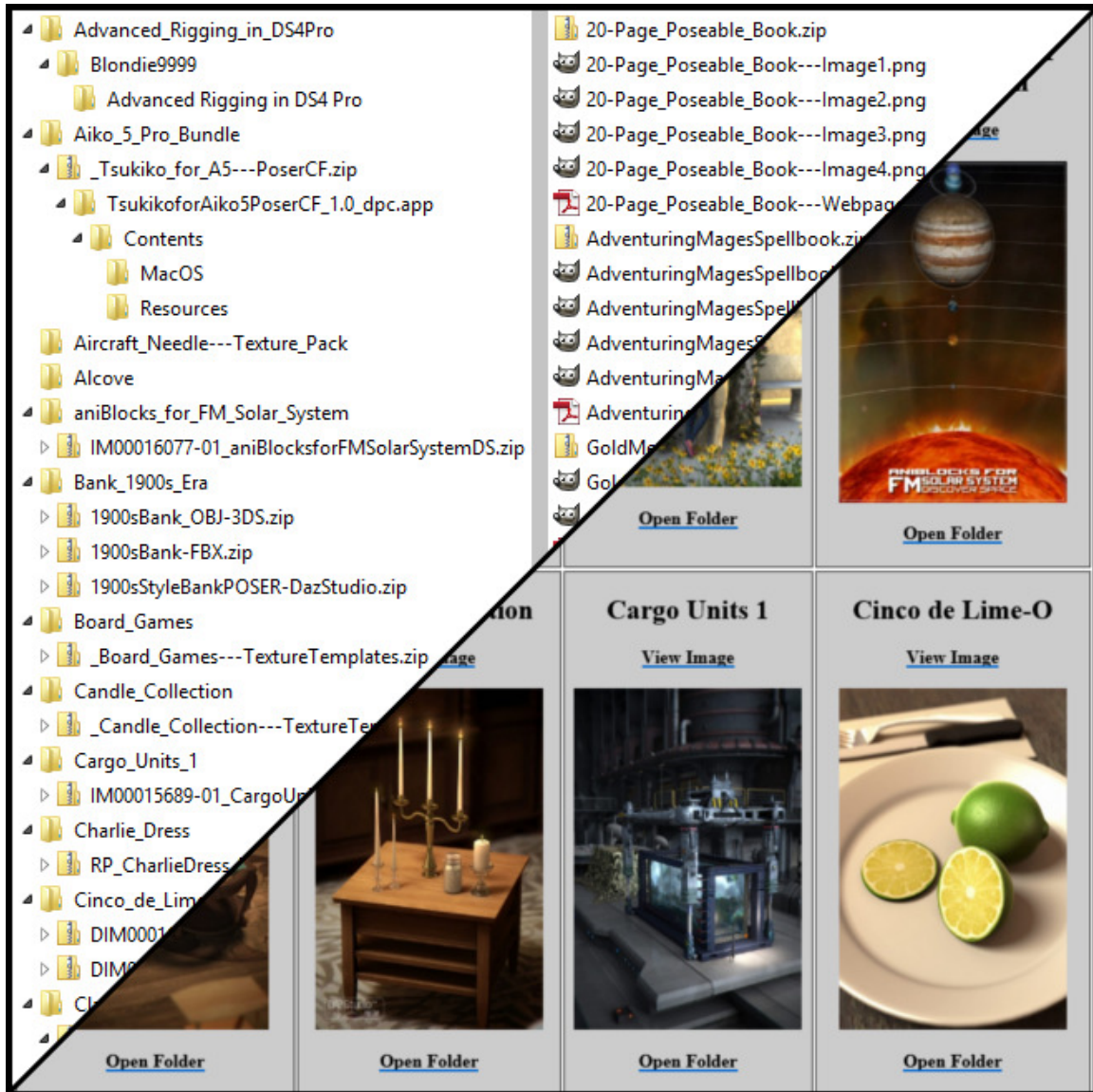
Build Your Own Business Catalogs

Copyright (c) 2013, Winterbrose. All rights reserved.



**Content-Cataloger PRO** adds new features which include 3 new layouts for oversized (huge) collections, exclusion of duplicate filenames, and automatic creation of thumbnails. You won't be disappointed with this release, but if the original version suits your needs stick with it. **Content-Cataloger** products allow you to create your very own personalized catalogs of your digital media library in seconds! Organize all your content with a visual catalog that can open in almost any web browser (IE, Firefox, Chrome, Opera) and don't just settle for text-only searching again! User customizable searching criteria, personalized titles and date stamping to keep your catalogs current. You can see in the comparison image below how much easier it will be to manage most content collections regardless of type (music, movies, photos, 3D)...

## BEFORE CONTENT-CATALOGER WE USED TEXT-BASED DIRECTORIES AND SEARCHES



NOW YOU CAN RAPIDLY FIND AND GO  
TO THE FOLDER OF YOUR DESIRED CONTENT

## Features

### PRO Features

- \* Automatically create separate thumbnail images to reduce browser overload for large image collections of high-resolution digital photos and graphics.
- \* Eliminate catalog images with duplicate filenames for smaller easier to use catalogs.
- \* Three more layout styles including "Tiny" for compressed collections with many entries.

### Standard Features

- \* Instantly create Visual Catalogs of your digital media collections with graphics images: Music, Photos, Apps, Graphics, 3D Content and more...
- \* Save one complete catalog of all your media; or create as many catalogs as you need for each category in your library.
- \* Completely dynamic!  
When your content changes, quickly create a replacement catalog with ease.
- \* Do you ever forget where you placed that important media file? No need to worry, just click the Open Folder link found below each image entry in catalogs and it will open the folder for you.
- \* Image-driven search engine creates html catalog of all images matching your search criteria that are compatible with almost any modern web browser (IE, Firefox, Chrome, Opera, etc).
- \* Your media is never altered or moved, it stays where you like it.
- \* Each catalog is imprinted with date created to keep track of when last updated.
- \* Choose your own Title/Description to categorize your catalog.
- \* Choose the shape style of images placed in your catalog:  
Square (Small or Big), Portrait or Landscape.
- \* Save and Load configurations for catalogs you refresh often.
- \* Need hardcopy of your catalog? Simply print your catalog to any PDF creator (ie Adobe Acrobat, PDF995) and keep it for yourself or share with your family and friends (great for photo albums).
- \* Use CCpro to create product pages for your own business and/or websites.

## Quick Start Guide

When you start Content Cataloger PRO (CCpro), you will notice that all the controls/options are contained in one user-friendly screen. If you are not sure what a section is about, click the small Instant Help icons that look like question marks "?" for a quick description.



**STEP-1:** Choose the location of your desired content (see Notes).

**STEP-2:** Choose the name and location of your catalog.

**STEP-3:** Decide how you want catalog entries sorted.

**STEP-4:** Create a Title to be included in your catalog.

**STEP-5:** Decide how to filter your search for catalog entries.

**STEP-6:** Choose the graphics image types to include.

**STEP-7:** Decide if you want to create separate thumbnail images for catalog.

**STEP-8:** Choose the image style for your catalog.

**STEP-9:** Click the Create Catalog button and whallah!!!

**NOTE:** If you may update this catalog again, be sure to Save your Config.

## **Browser Compatibility**

Content-Cataloger products are compatible with all popular web browsers (IE, Chrome, Firefox, etc). However, for those of us who have been around for awhile, we realize that not all web browsers are created equally. That said, be sure to use the browser best suited for the requirements of the catalogs you wish to create. For most people, Internet Explorer will suffice but in those cases of users creating catalogs of large collections of high-resolution digital images, we recommend using Chrome or Firefox.

## Catalog Overview

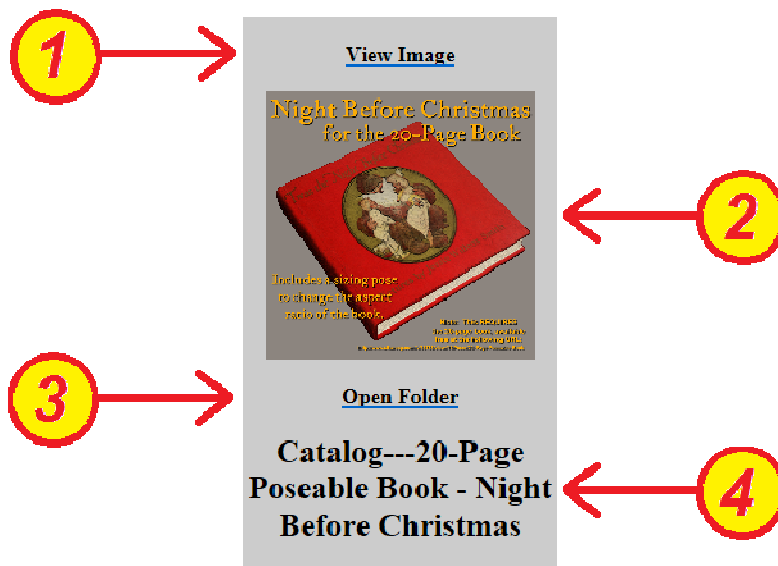
When viewing your catalogs, here is an example of what you will see:

### 3D Models

Created on 16-October-2013 with [Content-Cataloger PRO](#) available from [Winterbrose](#)



- 1 - **HYPERLINK**: Click to view the original image in full size.
- 2 - **THUMBNAIL**: Small representation of the original image.
- 3 - **HYPERLINK**: Click to Open Folder where original image is located.
- 4 - **FILENAME**: Name of original image file in more readable form.

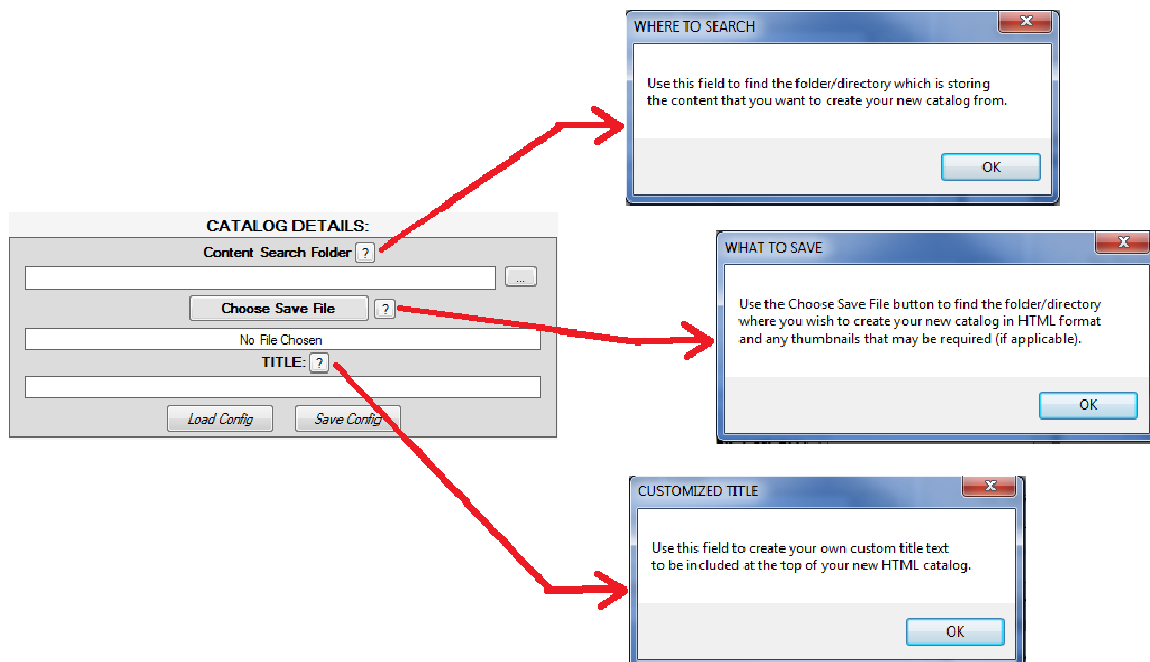


## Organizing Your Media

To make the best use of CCpro, you do not necessarily need to reorganize all your media files (for most of us this would be an overwhelming and time-intensive task in itself). However, there are times when you may choose to do that for your own reasons. With CCpro, you can have sorted entries in your catalogs using one of several methods with the most popular being by Name and by Folder. If needed, you can also sort your entries by their creation Date.

Below are some recommendations that will make using your new catalogs more enjoyable and make finding your media extremely easy and fast. Some of these procedures are more technical than others but none of them are required to catalog your media collections.

***C-C will work with most media collections without the need for reorganization***





## Location of Catalogs

*Keep your catalogs in easy to remember places so they are always easy to find.*

You do not have to recreate a catalog unless you have added items to or deleted items from a set in your collection or have changed the location of your collection. Even though you should not store your collections/sets in the root of your storage device (ie C:\ D:\), you may save your catalogs there because most catalogs usually "link" to images in the sets for your collections.

The image shows a software window titled "CATALOG DETAILS:". Inside the window, there are several fields and buttons. At the top, there is a "Content Search Folder" label with a question mark icon and an empty text box. Below this, a red rectangle highlights a section containing a "Choose Save File" button with a question mark icon, and a text box below it that says "No File Chosen". Below the highlighted section, there is a "TITLE:" label with a question mark icon and another empty text box. At the bottom of the window, there are two buttons: "Load Config" and "Save Config".

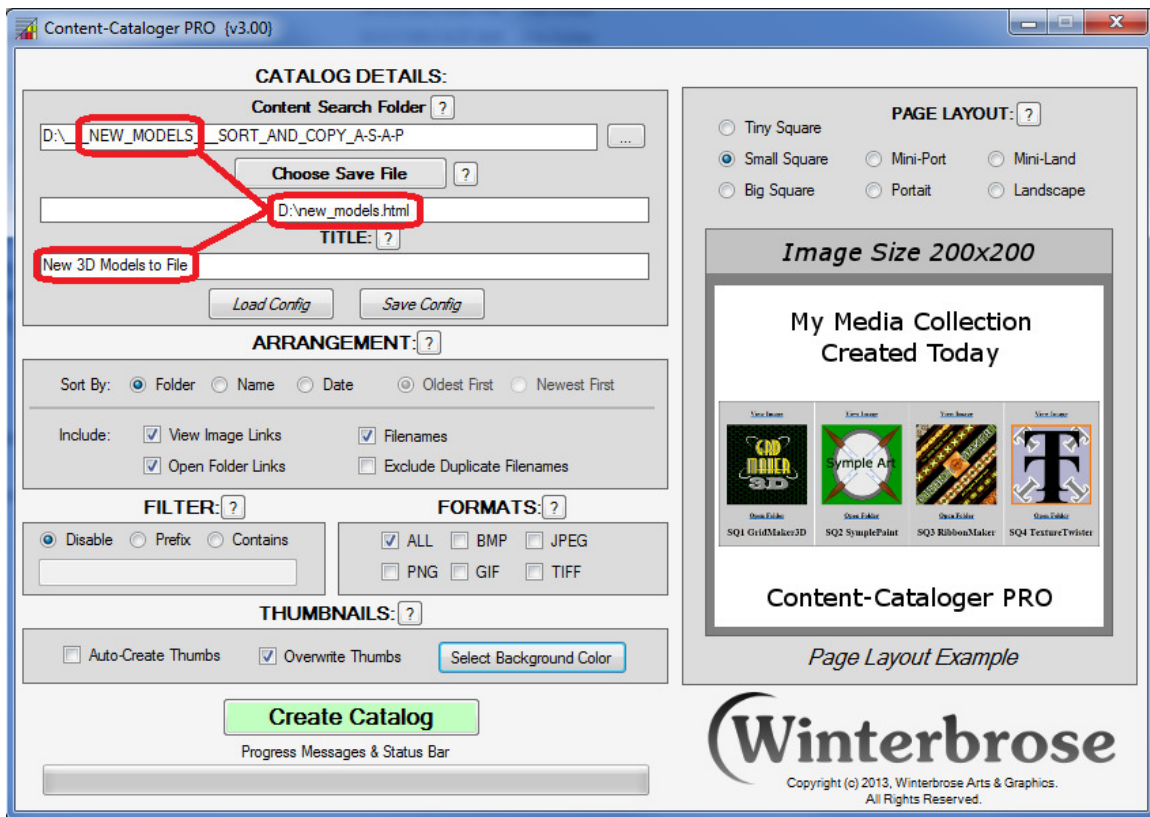


## Naming Catalogs

*You should use whatever makes sense to you.*

For the most part (and to simplify the creation process), you should use a filename for your catalog that is similar to, if not exactly the same, as the Title you use which will display your catalog when viewed. All catalogs are automatically saved as HTML files with the ".html" suffix to open in your web browser.

You can see in the example below how we used the terms "new" and "models" for our catalog name and title because it was the most relative phrase to our search directory.



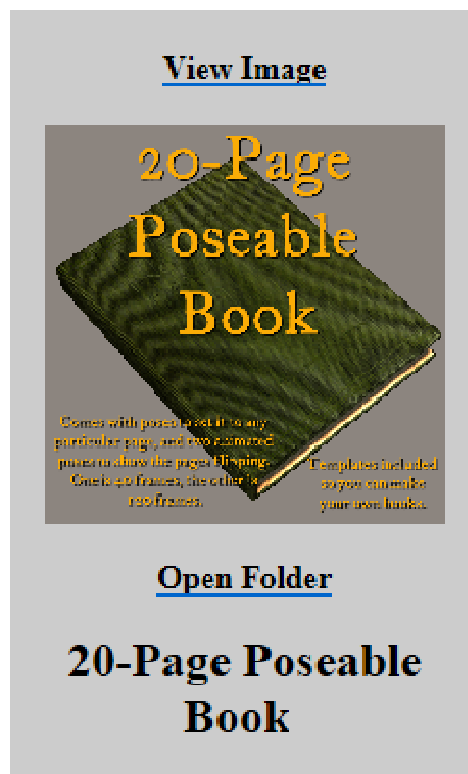
## Underscore Replacement

*Supports Legacy File Naming Conventions.*

When creating the header portion of an entry for your own catalogs, CCpro automatically replaces any underscore "\_" characters with the space " " character. This is an important feature to add readability to your catalogs while maintaining support for file naming restrictions that do not allow use of space character.

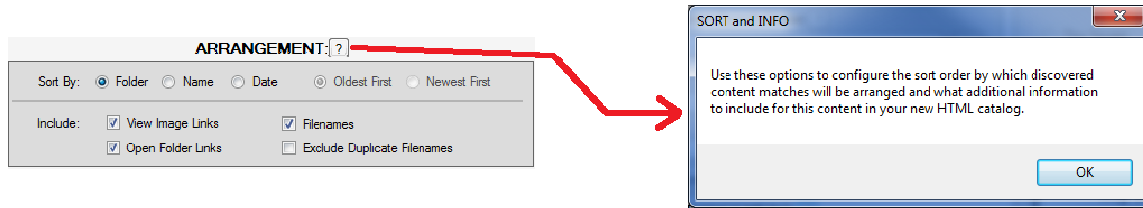
 Catalog---20-Page\_Poseable\_Book.png

**Catalog---20-Page\_Poseable\_Book.png  
becomes  
20-Page Poseable Book**



## Customized Output

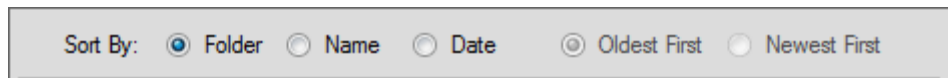
You can customize what to include/exclude from your new catalogs in the Arrangement panel.



## Custom Sorting

*Most people will sort by folder.*

You can have sorted entries in your catalogs using one of several methods with the most popular being by Folder and by Name. If needed, you can also sort your entries by their creation Date.



## Hyperlinks & Filenames

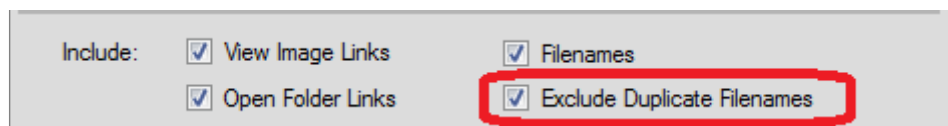
*Hyperlinks and Filenames are included by default.*

Once a catalog is created, it can be used to instantly view or locate an entry image simply by clicking the appropriate hyperlink. If the catalog you create is the basis for a printed copy or electronic version (ie PDF or eBook), then you can choose not to include hyperlinks to further compress the size of the catalog. If a strictly "visual" catalog is your goal, then you can choose not to include filenames.



Include: ☒ View Image Links ☒ Filenames  
☒ Open Folder Links ☐ Exclude Duplicate Filenames

Many collectors of downloadable media and electronic content have duplicate entries of the same image file spread across their collection. This is usually the result of bundles and sets of content where you maintain a "group" image such as a coverpage or collage in a fashion that ensures each folder/directory containing important files from that bundle/set also contain the group image. You can choose to eliminate duplicate filenames, but this will have a significant impact on the processing time of your content collection as each and every file found will need to be analyzed. The only entry included for each set of duplicates will be the first found during entry searches.



Include: ☒ View Image Links ☒ Filenames  
☒ Open Folder Links ☒ Exclude Duplicate Filenames

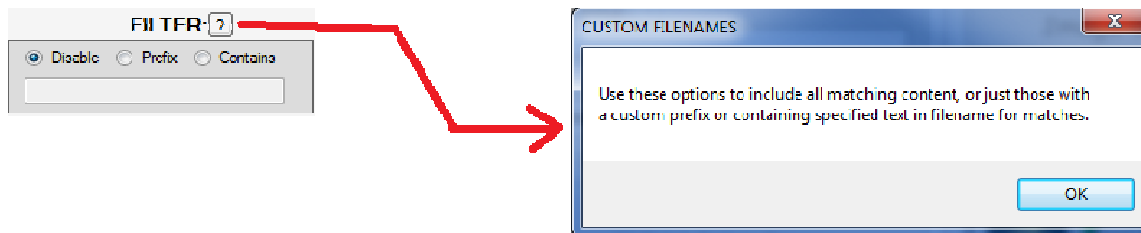
## User Specific Filtering

*Use a naming convention for the most important image in a set of media that you would like to represent that set.*

This tip applies more to 3D Content and similar collections where the user may have more than one image in the set but there is one "main" image that represents the set. For Photo, Music and Movie collections you will most likely "Disable" filtering as most of these sets only contain one main image (ie album cover or DVD jacket) or no main image at all (show me all my digital photos).

By specifying one image to represent a set in your collection, you can use the "Prefix" or "Contains" filters to create a catalog of those images only. This will make your catalogs easier to view and find specific items you are searching for.

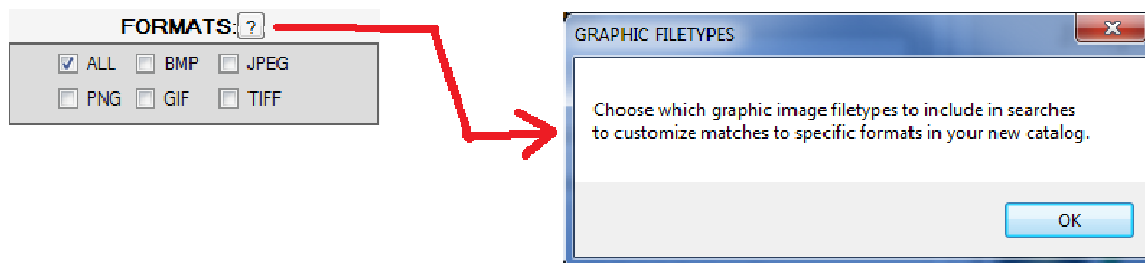
The author's personal preference is to prefix the main images in his collections with "Catalog---" (see CCpro In Action section).



## Supported Image Filetypes

When creating a new catalog, CCpro will search for and find images of the following types:

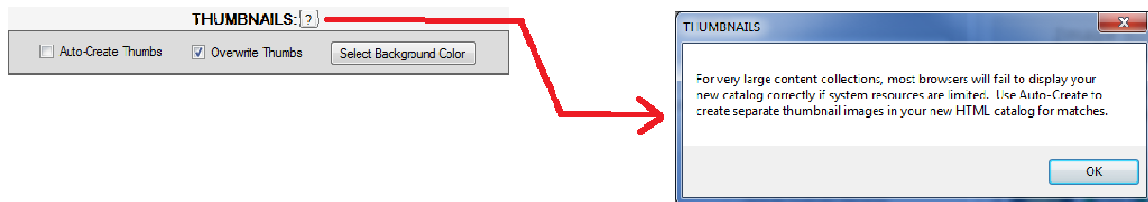
BMP, JPG, PNG, GIF, TIF



## Image Pointers vs. Thumbnails

Because the catalogs you create are essentially "pointing" to the images in your collection of media, the browser you use to open the catalogs has to read each and every entries image to create it's thumbnail. We recommend that if the images in your collection are rather large in pixels, that you do one of the following:

1. Permanently create smaller images in your collection to use with Filtered searches.
2. Use the Auto-Create Thumbs feature to automatically create thumbs for your catalog.

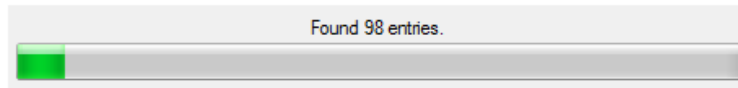


**AUTO-CREATE  
THUMBNAILS**  
*Is Processor Intensive  
And Consumes Memory*

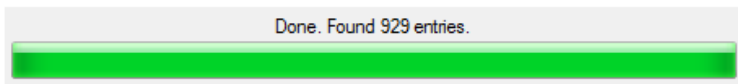
### Progress Status Bar

The progress bar gives a visual representation of the progress of CCpro in creating your new catalogs. Just above the progress bar you will see the current count of the number of images that have matched your search and filter criteria to be included. It will display Done and the total number found upon completion.

### Search In Progress



### Catalog Completed



CCpro can handle quite large media collections, however the speed with which a catalog is completed and the ability to successfully process a collection are dependent on your system resources (ie CPU, Memory, Storage).

***For VERY LARGE  
Content Sets, Windows  
May Say CCpro  
Is Not Responding***

If you get a "Not Responding" message from Windows, it is most likely because you search criteria you specified is processing a very large number of files. In most cases, simply ignore this message until CCpro has completed its processing.

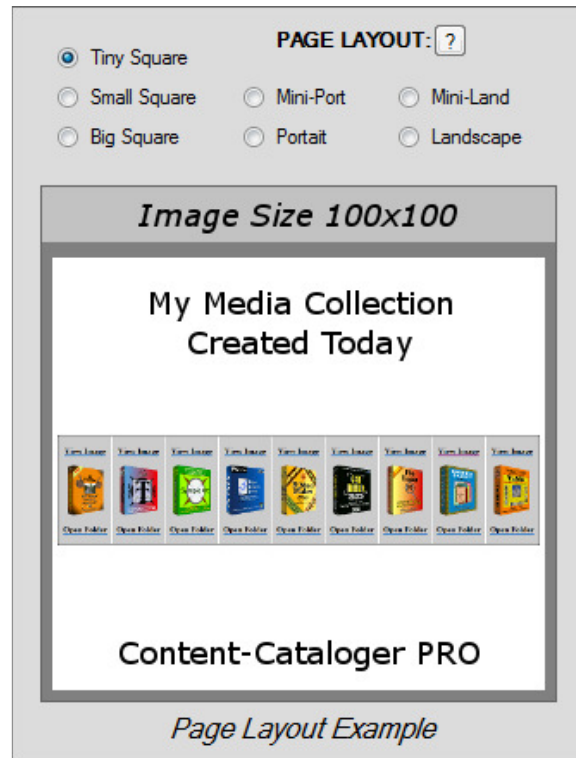


## Thumbnail Sizes and Styles

You have 7 choices of thumbnail styles for your catalogs:  
Tiny/Small/Big Square, Mini-Portrait / Portrait, and Mini-Landscape / Landscape.

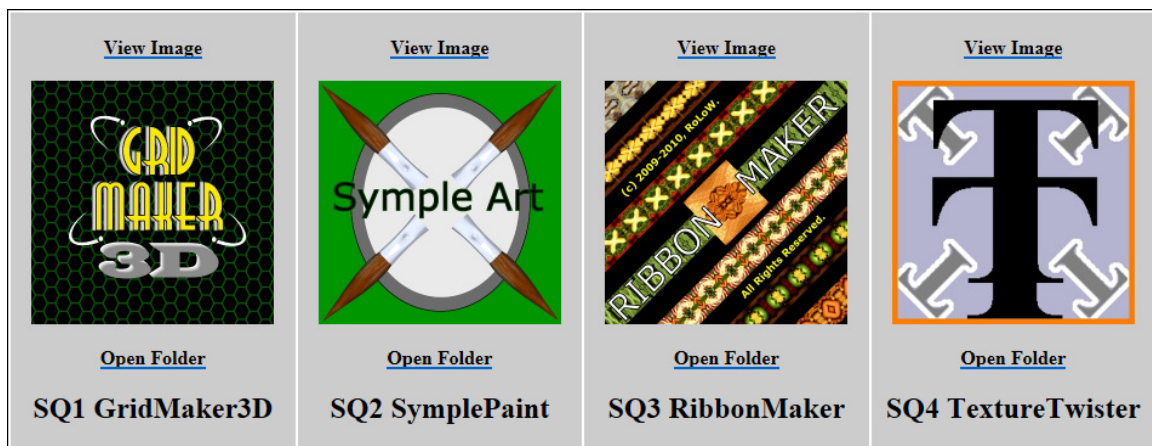
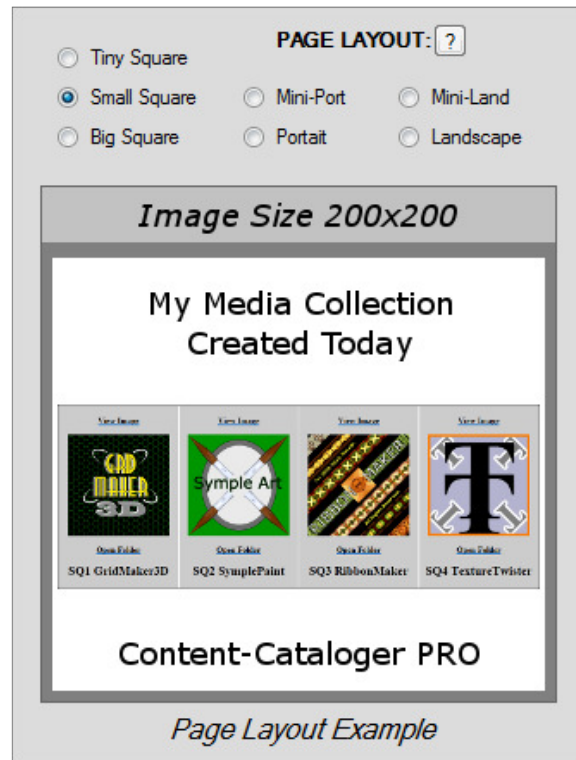
### TINY SQUARE

Tiny Square is great for making very large collections into a compact catalog without filenames.



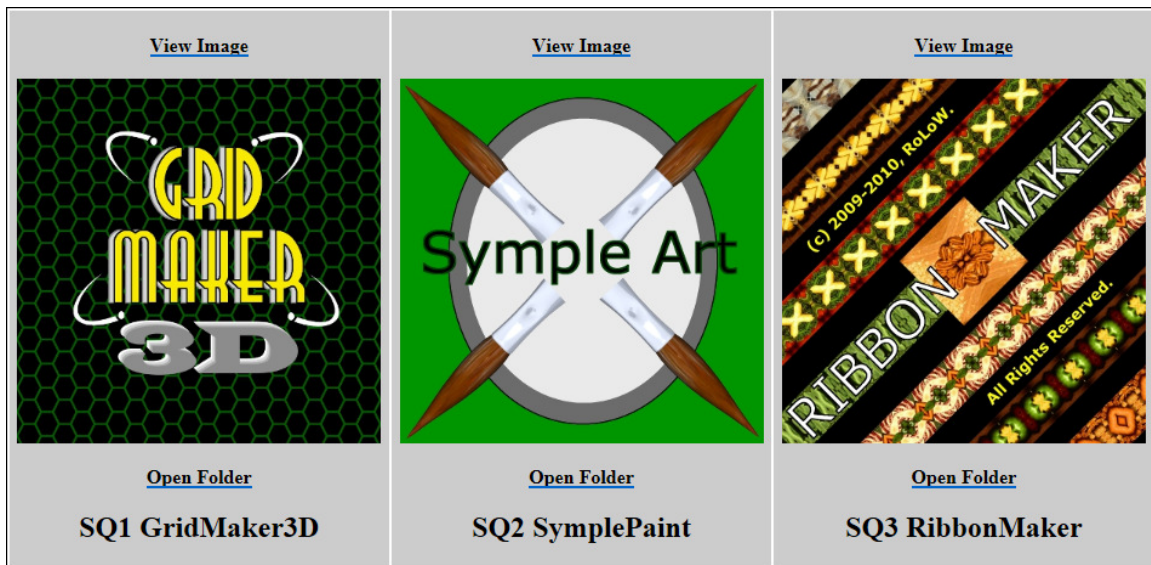
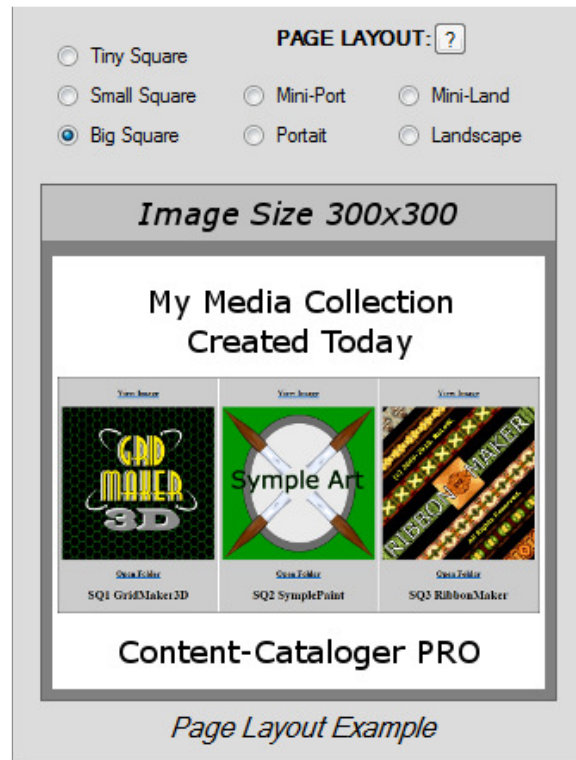
## SMALL SQUARE

Small Square is a general purpose and useful for almost anything.



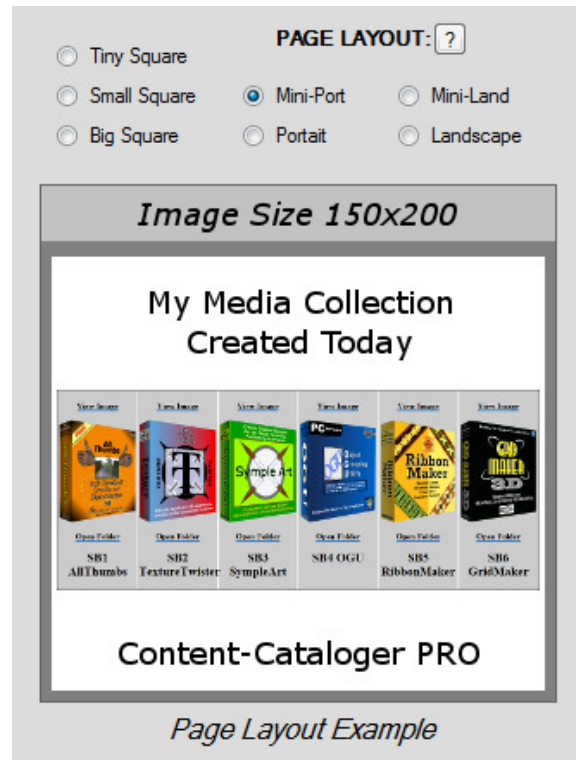
## BIG SQUARE

Big square is great for music album covers or other squared images.



## MINI-PORTRAIT

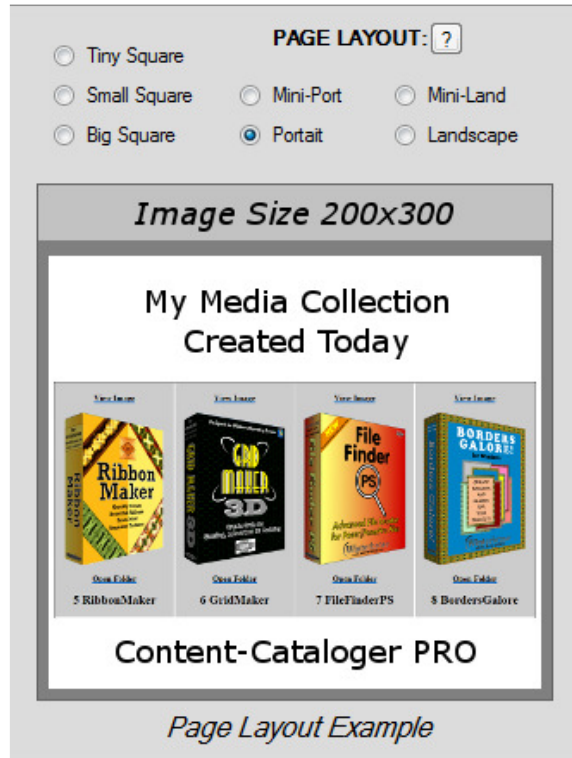
Mini-Port has same uses as Portrait but with smaller thumbnails.





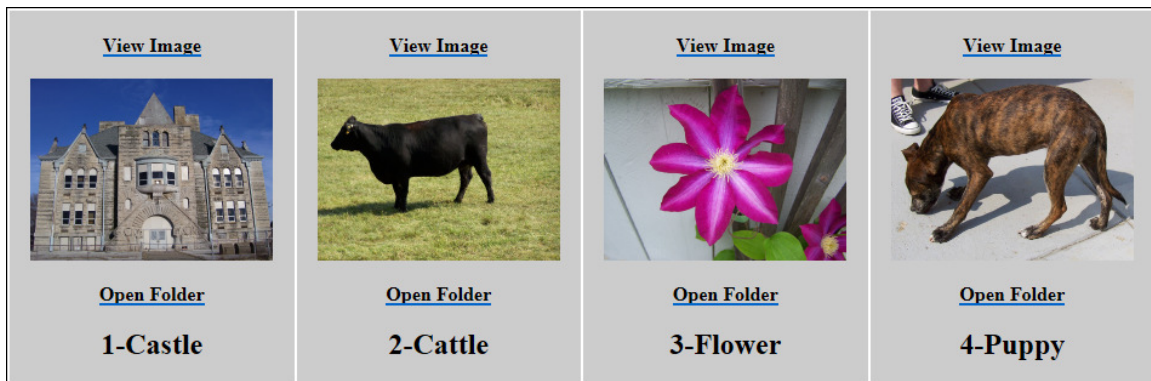
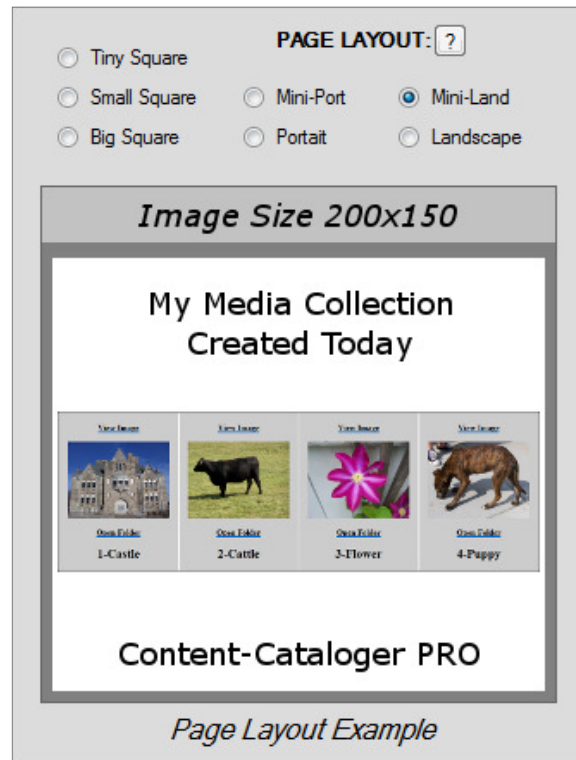
## PORTRAIT

Portrait is great for downloaded software, 3D content and even digital photos.



## MINI-LANDSCAPE

Mini-Land has same uses as Landscape but with smaller thumbnails.



## LANDSCAPE

Landscape is great for digital photos.

☐ Tiny Square

☐ Small Square

☐ Big Square

☐ Mini-Port

☐ Mini-Land

☐ Portait

☒ Landscape

PAGE LAYOUT: ?

Image Size 300x200

My Media Collection  
Created Today

View Image



Open Folder

1-Castle

View Image



Open Folder

2-Puppy

View Image



Open Folder

3-Flower

Content-Cataloger PRO

Page Layout Example

<div><div><a href="#">View Image</a></div><div></div><div><div><a href="#">Open Folder</a></div><div>1-Castle</div></div></div>	<div><div><a href="#">View Image</a></div><div></div><div><div><a href="#">Open Folder</a></div><div>2-Puppy</div></div></div>	<div><div><a href="#">View Image</a></div><div></div><div><div><a href="#">Open Folder</a></div><div>3-Flower</div></div></div>
--	---	--

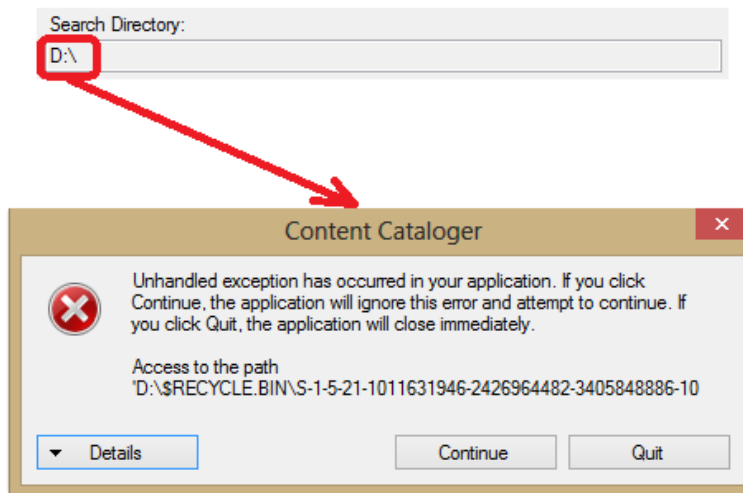
Page 22 of 30



### Important Notice

The Content Cataloger applications are strongly coded executables and will attempt to read all folders/directories in the selected path. Because of this, all users should not use the root of any drive (ie C:\ or D:\) as their Search Directory as it may cause a system error like the one shown below.

### System Error due to selecting Root Directory for Searching



To avoid this error, which should not present a problem for most users, is to simply keep all your media in designated folders and/or directories of your choosing on your storage devices.

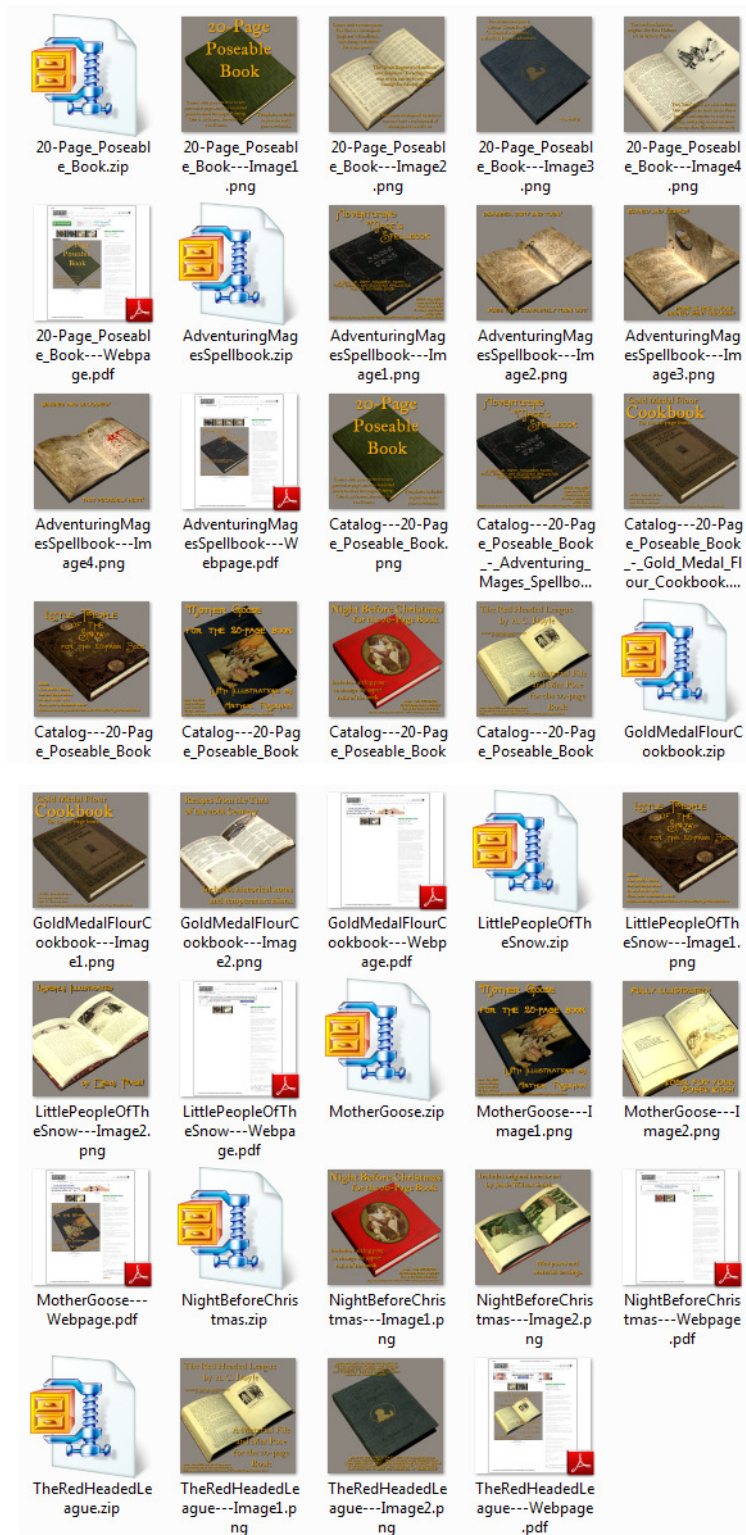
**DO NOT USE ROOT  
DIRECTORIES FOR  
SEARCH DIRECTORY**

## Content-Cataloger Products In Action

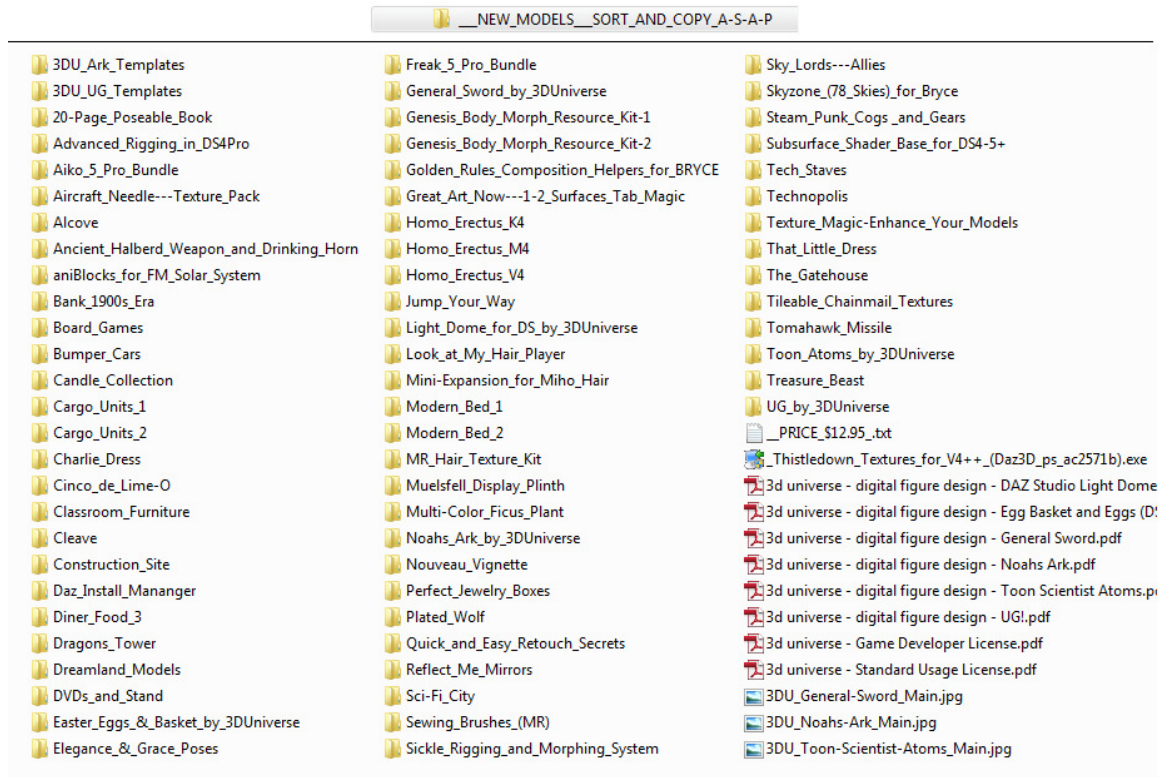
As you can see in this set of files for poseable book in our New Models collection, there are 25 images. If you look closely, you will notice that 7 of the images begin with the words “Catalog---“.

20-Page_Poseable_Book					
Name	Date	Type	Size	Tags	Dimensions
20-Page_Poseable_Book.zip	1/29/2013 5:11 PM	WinZip File	42,054 KB		
20-Page_Poseable_Book---Image1.png	1/29/2013 5:13 PM	PNG image	471 KB		600 x 600
20-Page_Poseable_Book---Image2.png	1/29/2013 5:15 PM	PNG image	455 KB		600 x 600
20-Page_Poseable_Book---Image3.png	1/29/2013 5:15 PM	PNG image	458 KB		600 x 600
20-Page_Poseable_Book---Image4.png	1/29/2013 5:15 PM	PNG image	489 KB		600 x 600
20-Page_Poseable_Book---Webpage.pdf	1/29/2013 5:16 PM	Adobe Acrobat D...	1,714 KB		
AdventuringMagesSpellbook.zip	1/29/2013 5:17 PM	WinZip File	42,751 KB		
AdventuringMagesSpellbook---Image1.png	1/29/2013 5:21 PM	PNG image	361 KB		600 x 600
AdventuringMagesSpellbook---Image2.png	1/29/2013 5:22 PM	PNG image	397 KB		600 x 600
AdventuringMagesSpellbook---Image3.png	1/29/2013 5:22 PM	PNG image	430 KB		600 x 600
AdventuringMagesSpellbook---Image4.png	1/29/2013 5:22 PM	PNG image	396 KB		600 x 600
AdventuringMagesSpellbook---Webpage.pdf	1/29/2013 5:23 PM	Adobe Acrobat D...	1,062 KB		
Catalog---20-Page_Poseable_Book.png	1/29/2013 5:13 PM	PNG image	471 KB		600 x 600
Catalog---20-Page_Poseable_Book_-_Adventuring_Mages_Spellbook.png	1/29/2013 5:21 PM	PNG image	361 KB		600 x 600
Catalog---20-Page_Poseable_Book_-_Gold_Medal_Flour_Cookbook.png	1/29/2013 5:30 PM	PNG image	338 KB		600 x 600
Catalog---20-Page_Poseable_Book_-_Little_People_Of_The_Snow.png	1/29/2013 5:54 PM	PNG image	385 KB		600 x 600
Catalog---20-Page_Poseable_Book_-_Mother_Goose.png	1/29/2013 5:43 PM	PNG image	398 KB		600 x 600
Catalog---20-Page_Poseable_Book_-_Night_Before_Christmas.png	1/29/2013 5:39 PM	PNG image	389 KB		600 x 600
Catalog---20-Page_Poseable_Book_-_The_Red_Headed_League.png	1/29/2013 6:12 PM	PNG image	394 KB		600 x 600
GoldMedalFlourCookbook.zip	1/29/2013 5:24 PM	WinZip File	37,379 KB		
GoldMedalFlourCookbook---Image1.png	1/29/2013 5:30 PM	PNG image	338 KB		600 x 600
GoldMedalFlourCookbook---Image2.png	1/29/2013 5:30 PM	PNG image	391 KB		600 x 600
GoldMedalFlourCookbook---Webpage.pdf	1/29/2013 5:30 PM	Adobe Acrobat D...	1,023 KB		
LittlePeopleOfTheSnow.zip	1/29/2013 5:46 PM	WinZip File	25,712 KB		
LittlePeopleOfTheSnow---Image1.png	1/29/2013 5:54 PM	PNG image	385 KB		600 x 600
LittlePeopleOfTheSnow---Image2.png	1/29/2013 5:54 PM	PNG image	316 KB		600 x 600
LittlePeopleOfTheSnow---Webpage.pdf	1/29/2013 5:54 PM	Adobe Acrobat D...	1,167 KB		
MotherGoose.zip	1/29/2013 5:41 PM	WinZip File	21,066 KB		
MotherGoose---Image1.png	1/29/2013 5:43 PM	PNG image	398 KB		600 x 600
MotherGoose---Image2.png	1/29/2013 5:43 PM	PNG image	336 KB		600 x 600
MotherGoose---Webpage.pdf	1/29/2013 5:44 PM	Adobe Acrobat D...	1,100 KB		
NightBeforeChristmas.zip	1/29/2013 5:31 PM	WinZip File	40,456 KB		
NightBeforeChristmas---Image1.png	1/29/2013 5:39 PM	PNG image	389 KB		600 x 600
NightBeforeChristmas---Image2.png	1/29/2013 5:39 PM	PNG image	342 KB		600 x 600
NightBeforeChristmas---Webpage.pdf	1/29/2013 5:39 PM	Adobe Acrobat D...	1,106 KB		
TheRedHeadedLeague.zip	1/29/2013 6:08 PM	WinZip File	36,551 KB		
TheRedHeadedLeague---Image1.png	1/29/2013 6:12 PM	PNG image	394 KB		600 x 600
TheRedHeadedLeague---Image2.png	1/29/2013 6:12 PM	PNG image	494 KB		600 x 600
TheRedHeadedLeague---Webpage.pdf	1/29/2013 6:12 PM	Adobe Acrobat D...	1,291 KB		

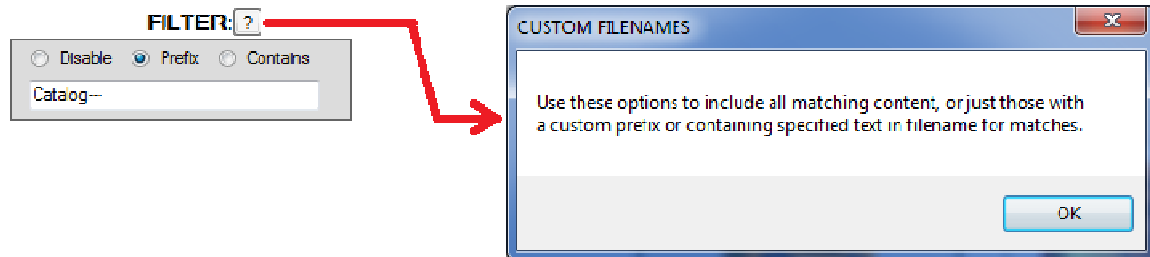
You could simply use Windows Explorer to view the contents of the folder as thumbnails, however as in this example it is only good if you know where you have placed the folder containing poseable book.



And this is just one of 68 new model sets that need sorted and organized when time permits. So how are we going to remember all the stuff that I have downloaded? Just take a look at all the folders and you can just imagine the images contained therein.



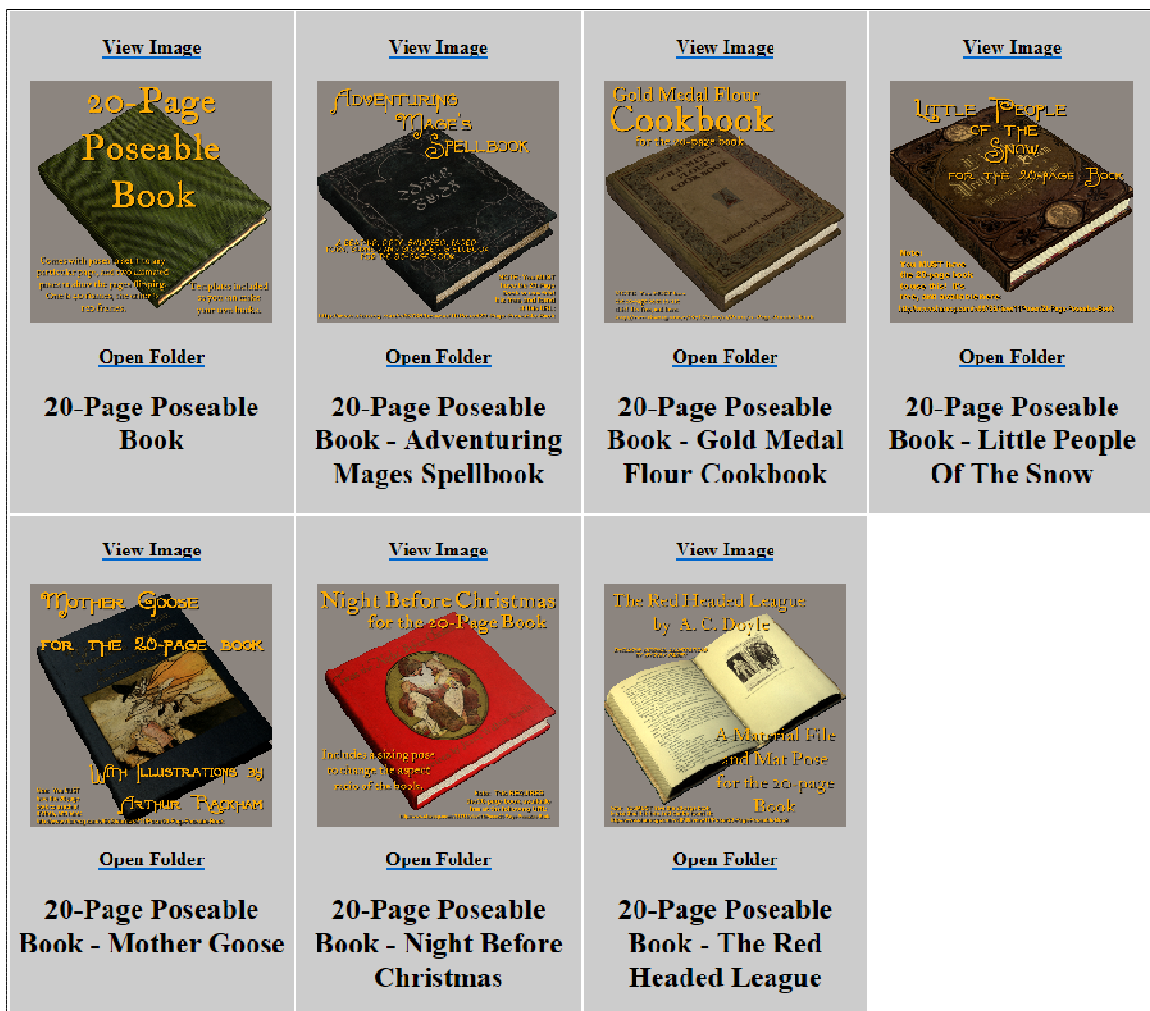
We ran CCpro to search our New Models directory and save the catalog to New\_Models.html giving our catalog an appropriate title and using the prefix “Catalog---“ because those are the only images we wish to include in our new catalog.



Check out how great our new catalog looks.

## Poseable Book Model

Created on 17-October-2013 with [Content-Cataloger PRO](#) available from [Winterbrose](#)





Each entry in your catalogs will have a View Image and Open Folder link which allow you to view the image at full-size and go directly to the folder that is holding your media set.

The diagram illustrates the workflow for viewing and accessing media sets. It starts with a catalog entry on the left, which includes a thumbnail image of a book cover and two links: 'View Image' and 'Open Folder'. A red arrow points from the 'View Image' link to a larger, full-size image of the book cover in the center. Another red arrow points from the 'Open Folder' link to a file explorer window on the right. The file explorer shows a directory structure with a folder named '20-Page Poseable Book' selected, displaying a list of files and folders within it.

**View Image**

**Open Folder**

**20-Page Poseable Book - Mother Goose**

**MOTHER GOOSE FOR THE 20-PAGE BOOK WITH ILLUSTRATIONS BY ARTHUR RACKHAM**

**20-Page Poseable Book**

Name	Date	Type	Size	Tags	Dimensions
20-Page Poseable Book.zip	1/24/2013 5:11 PM	WinZip File	42,354 KB		
20-Page Poseable Book---Image1.png	1/24/2013 5:13 PM	PNG image	471 KB		600 x 600
20-Page Poseable Book---Image2.png	1/24/2013 5:15 PM	PNG image	455 KB		600 x 600
20-Page Poseable Book---Image3.png	1/24/2013 5:15 PM	PNG image	458 KB		600 x 600
20-Page Poseable Book---Image4.png	1/24/2013 5:15 PM	PNG image	489 KB		600 x 600
20-Page Poseable Book---Webpage.pdf	1/29/2013 5:16 PM	Adobe Acrobat D...	1,714 KB		
AdventuringVagetsSpellbook.zip	1/29/2013 5:17 PM	WinZip File	42,751 KB		
AdventuringVagetsSpellbook---Image1.png	1/29/2013 5:21 PM	PNG image	361 KB		600 x 600
AdventuringVagetsSpellbook---Image2.png	1/29/2013 5:22 PM	PNG image	397 KB		600 x 600
AdventuringVagetsSpellbook---Image3.png	1/29/2013 5:22 PM	PNG image	430 KB		600 x 600
AdventuringVagetsSpellbook---Image4.png	1/29/2013 5:22 PM	PNG image	396 KB		600 x 600
AdventuringVagetsSpellbook---Webpage.pdf	1/29/2013 5:23 PM	Adobe Acrobat D...	1,062 KB		
Catalog---20-Page Poseable Book - Adventuring Vagets Spellbook.png	1/29/2013 5:23 PM	PNG image	471 KB		600 x 600
Catalog---20-Page Poseable Book - Gold Medal Flour Cookbook.png	1/29/2013 5:23 PM	PNG image	361 KB		600 x 600
Catalog---20-Page Poseable Book - Little People Of The Snow.png	1/29/2013 5:24 PM	PNG image	385 KB		600 x 600
Catalog---20-Page Poseable Book - Mother Goose.png	1/29/2013 5:24 PM	PNG image	398 KB		600 x 600
Catalog---20-Page Poseable Book - Night Before Christmas.png	1/29/2013 5:29 PM	PNG image	389 KB		600 x 600
Catalog---20-Page Poseable Book - The Red Headed League.png	1/29/2013 5:32 PM	PNG image	394 KB		600 x 600
GoldMedalHourCookbook.zip	1/29/2013 5:34 PM	WinZip File	31,319 KB		
GoldMedalHourCookbook---Image1.png	1/29/2013 5:38 PM	PNG image	338 KB		600 x 600
GoldMedalHourCookbook---Image2.png	1/29/2013 5:38 PM	PNG image	301 KB		600 x 600
GoldMedalHourCookbook---Webpage.pdf	1/29/2013 5:38 PM	Adobe Acrobat D...	1,023 KB		
LittlePeopleOfTheSnow.zip	1/29/2013 5:46 PM	WinZip File	25,112 KB		
LittlePeopleOfTheSnow---Image1.png	1/29/2013 5:54 PM	PNG image	385 KB		600 x 600
LittlePeopleOfTheSnow---Image2.png	1/29/2013 5:54 PM	PNG image	316 KB		600 x 600
LittlePeopleOfTheSnow---Webpage.pdf	1/29/2013 5:54 PM	Adobe Acrobat D...	1,161 KB		
MotherGoose.zip	1/29/2013 5:54 PM	WinZip File	21,008 KB		
MotherGoose---Image1.png	1/29/2013 5:54 PM	PNG image	398 KB		600 x 600

### ***Licensing***

The purchase of Content-Cataloger Pro software entitles the original purchaser to a non-transferrable single-user single-instance license for the software package to be installed on any computer system but to be executing on only a single computer system at any point in time. Content-Cataloger Pro software is not authorized to be used for projects that violate copyright and trademark laws. Purchasers will receive their personalized serial number from the reseller where purchased or directly from Winterbrose.

### ***IMPORTANT NOTICE***

Please read this section carefully before purchasing any downloadable product. All sales are final! No refunds on purchased software! Every computer system has a unique hardware and software configuration. Under certain conditions, the application may impact or be impacted by your system's particular configuration. Therefore, all users are highly encouraged to download the Demo Version to ensure compatibility with your computer system BEFORE purchasing a copy of the software.

### ***System Requirements***

#### **Microsoft Windows**

- Windows XP, Vista, Win7, Win8 or higher
- Microsoft .NET Framework 3.5 or higher
  - 1 GHz Pentium class or compatible  
(2 GHz or faster recommended)
  - 1 GB system RAM  
(4 GB or more recommended)
- 24-bit color display, 1024 x 768 resolution

#### **Macintosh**

- Sorry, Content-Cataloger is available only for PC.



Common Problems
<b>Did the DEMO version run properly on your system?</b> If yes, you need to ensure you have administrator rights when running CCpro the first time as it must create activation and registration files to enable all features.
<b>Do you have .NET Framework 3.5 installed for Windows?</b> Content-Cataloger Pro will not run properly or at all without updated dot-NET Framework.
<b>Did a crash occur immediately upon starting CCpro or when creating a catalog?</b> If Content-Cataloger Pro starts up fine, be sure you complete all parameter settings before creating catalog.
<b>Did you try to process a directory/folder path with an exceptionally large number of images?</b> The limit of discovered images ranges from 500 to 5,000 depending on your system config.
<b>Do you have write permissions to the directory to where you want the catalog HTML file saved?</b> You must be running CCpro as administrator or have write permissions for the location where you save your catalogs.
<b>Did I need access to the internet to Activate and Register my product?</b> No, however to receive your Activation Key and Registration Codes you will need a valid email address.